

Children's Electric Ride On Car

Installation And Operation Manual



Model : NEW FORD Ranger
Age Range: 37-96 Month
Maximum Weight: 35 KGS
Execution Standard:
GB6675&GB19865
EN71&EN62115



Pictures are for reference only, please adhere to the original products as standard

1:All spare parts when opens the carton

Car Body 1 PC	Front Windowshield 1PC	Hood 1PC	Steering wheel 1 PC
One set of four lights	Seat 1 PC	Front Wheels 2 PCS	Back Wheels 2 PCS
Wheel Covers 4 PCS	Rear View Mirrors 1 Pair	Charger 1 PC	Remote Control 1 PC

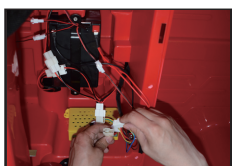


WARNING:



If you want to use carry handle under the specification of four motors, please switch to mode of 2*2 (Two motors drive).

2:Connecting the electricity



(According to the picture)

3:Installation of Steering Wheel:



Due to the reason of movement of steering tube, sometimes there is possibility that the hole on the steering wheel and the hole on the steering tube can not match well. If this happens, please use one hand to hold the hook under the car body in order to fix the steering tube. (Referring to the picture)

4 : Installation of one set of four lights



Firstly, please make the line with the SM plug insert to the car body through right small hole, and then connect to the SM plug in the battery tank. (According to the picture)

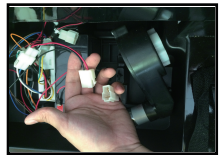
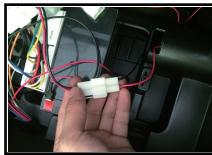
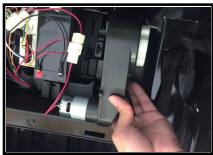


5 : Installation of seat

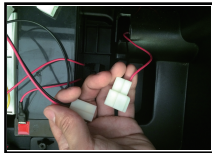


Put the seat on the car and use two screws to fix.
(According to the picture)

6.Installation of motor:



1-2). Please find the motors in the battery tank which are connected well ;



3). Disconnect the lines. (Referring to the picture).

4). Assemble the motor to the back wheel axle by inserting the axle into the hole of motor, and then connect the motor with lines to the car body well. (Referring to the picture)

5). Re connect the motor. (Referring to the picture)

6). Assembling the back wheel

7 : Installation of back wheels

Choose back wheels and then put at the back axle, and put one gasket, and then insert one cotter pin. Use the tool to fix the cotter pin and make it into circle,



otherwise it will rub against the wheels. Finally, assemble the wheel cover and use the screw to fix. (According to the picture)



8 : Installation of front wheels



Put one gasket first, and then put front wheels at the front axle. And then same as installation of back wheels. (According to the picture)

9 : Installation of window shield



Please first insert the window shield into the car, and then use the screw to fix them.

10 : Installation of hood



Insert the hood to the car and then use screw to fix.

Please aim the retaining grooves.

11 : Installation of rear view mirrors



Make the rear view mirrors aim at the neck and push inside.

Attention: Installation must be done by adults.

■ Specifications

Item	Specifications
Battery	12V7AH/12V10AH/12V14AH
Motor	35W
Available Ages	Children from 37-96 month
Maximum Weight	35KGS
Size	139*83*81cm
Speed	3-5km/h
Charging Time	8-12hours
Remote Control Batteries	2PCS of AA Batteries
Charger	Input:220V/110V Output:DC12v1000MA

■ CHARGING PRECAUTIONS

Battery polarity cannot be reversed, please ensure the red wire is connected to the red battery terminal and the black wire is connected to the black battery terminal.

- Press the power switch to OFF position to turn the power off.
- Open the seat, connect the battery plug, red to red.
- Never drain battery completely or to a crawling speed, recharge the battery when a decrease in speed and power is noticed warranty will be voided if misuse has occurred.
- Battery charging must be done by adults only. Never allow children to charge the battery. A child could be injured by the electricity involved in charging the battery.
- Please don't connect the wires to a short circuit.

The charger and the battery are not a toy. Do not allow children to play with the charger and the battery.

Only operate the battery and charger specified according to the manual instructions.

- Please do not open the battery and the charger.
- To maintain safety of vehicle, always secure the battery with the bracket.
- The battery must be handled and operated by adults only: the battery is heavy and contains sulfuric acid (electrolyte). Dropping the battery could result in serious injury.
- Before charging the battery check if wear or damage to the battery, charger, the connectors and other parts. If any damage is found, the charger should be repaired or replaced immediately. Do not use a damaged charger.
- It is normal for the adaptor to feel warm during charging, but if the charger feels too hot, stop charging immediately and check the battery and adaptor.

When charging turn of the power switch.

Please charge the battery for 8-10 hours after first use.

Subsequent charges should be 6-8 hours but not exceeding 10 hours.

If not being used batteries should still be charged at least once a month to keep the cells active.

1. Plug the charge into the charging socket.
2. Plug the other end of the charger into your wall socket.

Batteries are perishable items that are subject to under and overcharging, please observe the charging times. Charge Hole

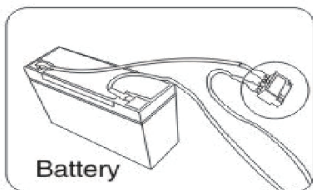
■ TROUBLESHOOTING

Problem: The car will not move

Answer 1: Please make sure the charger has been removed from the car charging point.

Answer 2: The battery is low on charger. Please charge for 6-8 hours but not exceeding 10 hours.

Charge at least once a month to keep the cells active



To avoid fuse cut off the power:

1. Max: 35kgs, overload is forbidden
2. Do not drag any item behind this product
3. Do not allow water or other liquids dip the electrical parts.
4. Do not change the line system by yourself.

⚠ WARNING

- For safe driving, please kindly pay attention to the following warning matters.
- The product must be assembled and adjusted by adult, please keep children away from moving parts.
- The product doesn't apply to 36-month and younger children due to internal small parts
- During driving, a child must be fixed by seat belt properly. Do not close to an fire!
- Any child must be supervised by adult while using the product and such the adult caregiver should not leave during driving process.
- Do not allow your children to stand or play on the foot pedal or in the electric car.
- The battery must be charged only by adult. Please charge the product before using!
- To avoid any harm to children, please keep plastic bags and other packaging materials away from children! Such the materials may cause suffocation!
- It is prohibited to use any parts from other manufacturers.
- The charger should not be played as a toy.
- The vehicle maximum load weight is 35KG, and please do not use on overload,
- The product applies to children at 37-96 months.
- The toy should not be connected to excessive powers (more than the quantity specified herein), and it should not be operated during charging process. Must with the protection device, can't use as traffic tools.
- This toy without braking device.
- Instructions for remote controller batteries.
- All batteries should be inserted with the correct polarity.
- Non-rechargeable battery should not be charged, please remove any running-off battery from the toy.
- Do not use old and new batteries together, or mix different types of batteries.
- Power terminals should not be short-circuited.
- Any rechargeable battery must only be charged under adult's supervision.
- Rechargeable batteries should be removed from the toy before charging.

■ TROUBLESHOOTING

Problem: The car only runs for a short time

Answer 1: The battery is low on charge. Please charge for 6-8 hours but not exceeding 10 hours.

Charge at least once a month to keep the active.

Answer 2: Battery ageing

The battery may need to be replaced depending on its charging history and age.

Problem: The sounds do not work.

Please ensure the volume is turned up and the Mp3 lead is not connected.

The steering wheel sounds will not work when the MP3 is plugged into the car.

Problem: Charger overheating

It is normal for the battery and charger to warm slightly during

Charging, if they feel excessively hot then please

Check for a current overload or battery short circuit

WARNING: Vehicle must be charged fully before use.

Please read manual carefully before use.

Adult assembly required.

This toy has no brake.

Not to be used in traffic

Always wear a helmet and protective clothing when riding.

Continuous adult at all times.

Please keep the manual and packing for future reference as it contains important information

The instructions for use should bear a reminder that the toy should be used with caution since skill is required to avoid falls or collisions causing injury to the user or third parties.

■ SAFETY PRECAUTIONS

01. While riding, adult supervision is required all the time
02. Always wear a helmet when driving/
03. Please don't drive near road or on the footpath.
04. It is not recommended to drive the vehicle on wet surface or on slope greater than 15-degree.
05. It is recommended to drive this vehicle on smooth surface only.
06. Please don't drive this vehicle outdoors when it is raining.
07. Make sure that the vehicle stop completely before changing direction from forward to reverse
08. Please don't allow children to operate the charger or play with the battery
09. Clean the vehicle with a dry cloth only.
10. Please follow the correct weight and age limits allowed to drive this vehicle.
11. It is prohibited to change the circuit or add other electric parts.
12. Adults must teach their children around safe driving procedures.
13. Please turn the power off when not in use.
14. Check the seat to ensure it has been fitted and secured with a bolt before driving.
15. Inspect all wires and connection of the vehicle periodically.
16. Charging the battery should only be done by adults.
17. Charging plug is located underneath the seat.
18. In order to avoid accidents, please ensure the vehicle is safe before driving.
19. Please don't let any child touch the wheels or be near them when the car is moving.
20. Please mind fingers in opening and closing doors.

USING INSTRUCTION



①

②

③

④

⑤

1. Choose Two motors or Four motors
2. Key start
3. Forward/Stop/Backward
4. MP4
5. TF (SD) interface
6. USB interface
7. Horn Button



⑦



Operations Guide

First time to use (Or replace the battery) select not to pair, the car can move after turning on power.

If select to be paired, please follow the bellows:

Step 1 Open the remote control battery compartment, put two AAA 1.5V batteries into the battery compartment (pay attention to the battery cavity polarity), close the cap, the frequency lamp flashes if the battery is installed correctly.

Step 2 Turn the car power, hold press the frequency key for 2-3 seconds.

Step 3 Then turn on car power immediately, the frequency lights off.

Please repeat steps 2-3 if the pairing is not successful.

General use

1. Speed Selection - LOW speed: Only one lamp flashing;

MED speed - Two lamps flashing;

HIGH speed - Three lamps flashing. Each has its own slow start and stop.

2. Press the STOP key will stop the car; Other keys like it meant.

3. The remote control will power off after 15's without operating, any key will power on.

Products through the FCC certification testing and ECM credential.

This remote must be used by adult only

Pictures are for reference only, please adhere to the original products as standard

PlayActive

outdoor toys for kids

Thank you for choosing a PlayActive product. We hope your child will endure many years of fun with this item. If you require any trouble shooting assistance or help on assembly please view our tutorial videos available on our website.

www.playactive.net

WARNING!

Do not use this vehicle indoors. Using this vehicle in confined areas may cause the vehicle's motors to over load.

If you require any further assistance please contact the outlet you purchased this item from.