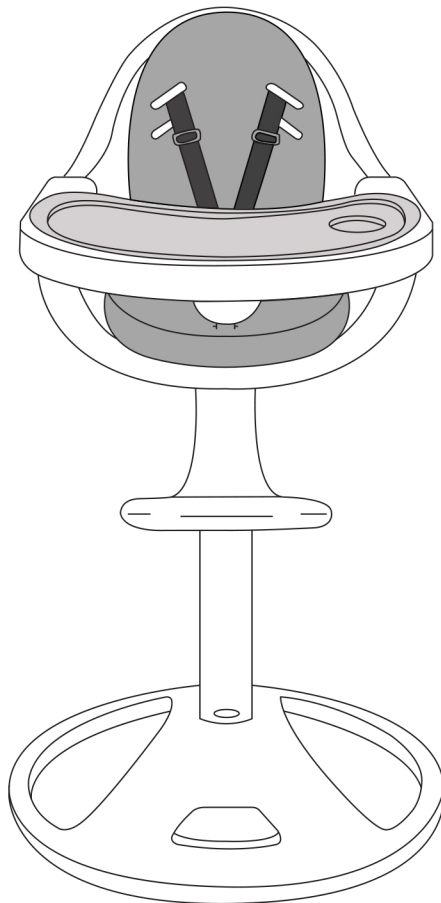


INSTRUCTION MANUAL

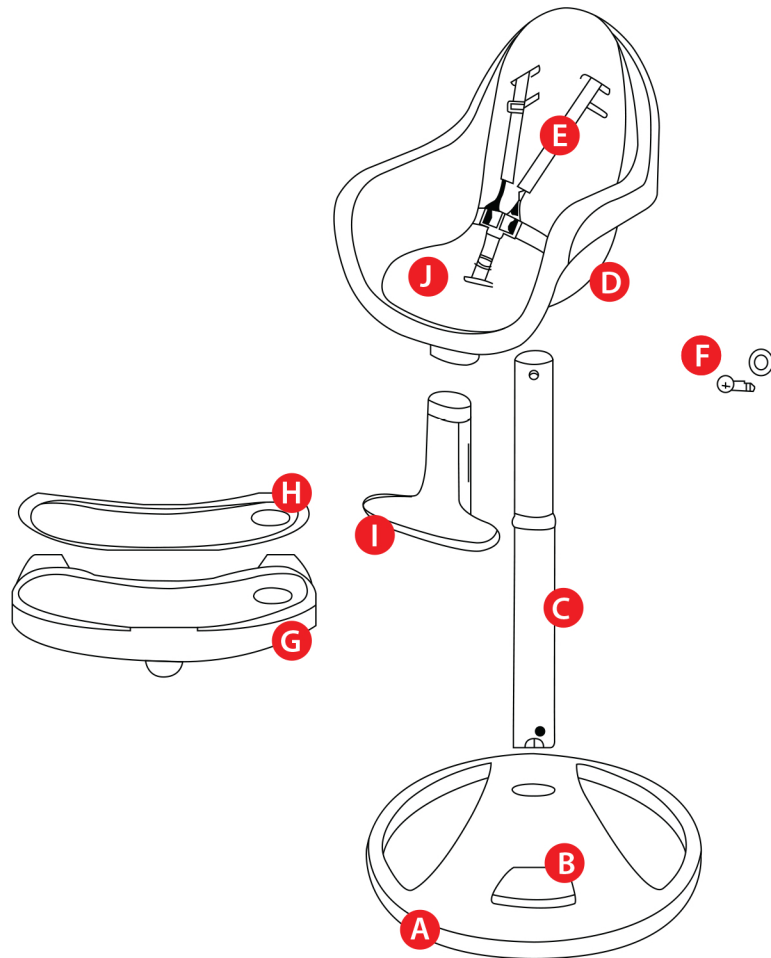
PLEASE KEEP THESE INSTRUCTIONS FOR FUTURE REFERENCE AS YOUR CHILD'S SAFETY DEPENDS ON IT.

- Suitable for babies that can sit up unaided and are approximately 6 months - 3 years old.
- Suitable for babies with a maximum weight of 15kgs.
- Complies with BS EN 14988 -1, 2006+A1 2012
- Adult assembly required



PARTS LIST

- A. Base
- B. Rotation button
- C. Metal Pole
- D. Seat
- E. 5Point harness system
- F. Screws & Washers
- G. Tray
- H. Top Tray
- I. Foot rest
- J. EVA foam pad



! DO NOT USE IF ANY PARTS ARE MISSING OR BROKEN

WARNING

THE CHILD SHOULD BE SECURED IN THE HIGH CHAIR AT ALL TIMES BY THE RESTRAINING SYSTEM. THE TRAY IS NOT DESIGNED TO HOLD THE CHILD IN THE CHAIR.

ASSEMBLY

1. Align notch in bottom of the metal pole with rotation base as shown in figure 1.
2. While pressing the rotation button on the base, push the metal pole downwards until fully inserted into base as shown in figure 2. Then release the rotation button.

3. Lie the assembly on its side and screw securely three screws(x3) with washers into the base to secure the metal pole as shown in figure 3.

! ENSURE METAL POLE IS LOCKED INTO BASE BY GENTLY PULLING UP ON IT.

4. Stand the assembly upright and find the locking pin located on top of the metal pole. Press the locking pin while sliding the seat into the metal pole to lock into place as shown in figure 4.

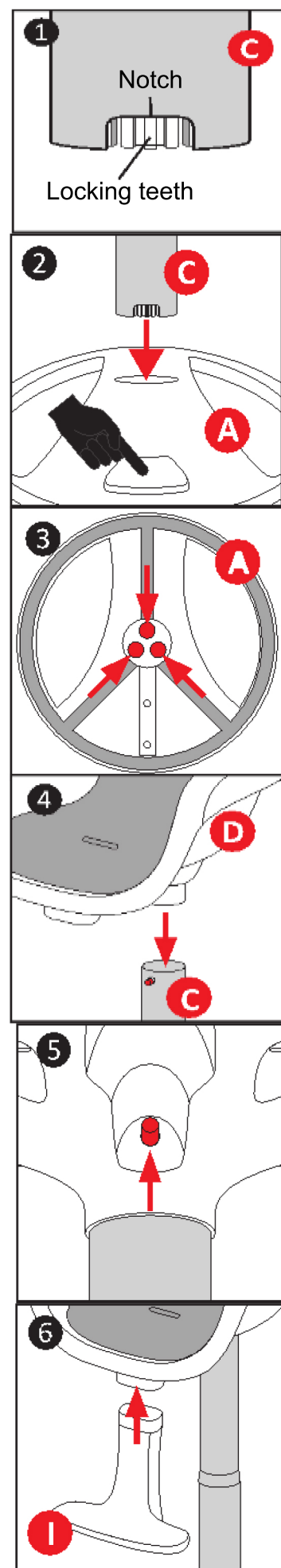
! Ensure locking pin locks into place through hole in base as shown in figure 5. Gently pull the seat up to ensure it is locked and secure.

To remove press locking clip and lift the seat off the metal pole.

5. Attach footrest by sliding it up into the bottom of the seat base as shown in figure 6

! ENSURE FOOTREST IS LOCKED INTO SEAT BY GENTLY PULLING ON IT.

To remove press locking clip and pull out footrest



USING THE HIGH CHAIR

1.USING & INSTALLING THE HARNESS

1. Place your child in the seat with the crotch strap in between the child's legs, and fasten the 5-point harness by securing both the waist and crotch fasteners figure 1.

2. Adjust the harness so it fits snugly around the child without causing discomfort. Slide the adjusters on the shoulders, waist and crotch straps to loosen or tighten the harness system figure 2.

3. To release the harness press both buttons and separate both waist buckles from the crotch strap.

! ALWAYS USE CROTCH STRAP IN COMBINATION WITH THE WAIST STRAP.

! ALWAYS SECURE THE CHILD IN THE RESTRAINT TO AVOID SERIOUS INJURY TO YOUR CHILD FROM FALLING OR SLIDING OUT.

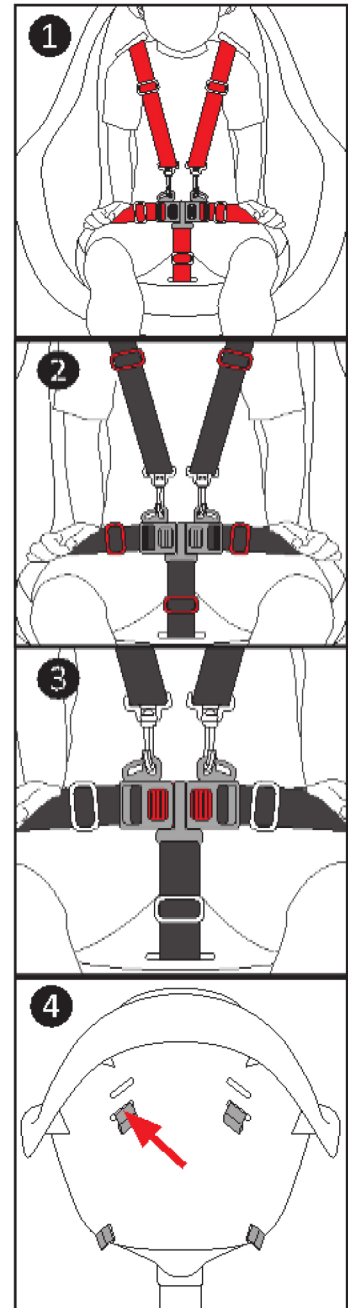
This high chair harness has TWO shoulder height positions. Choose the position most suitable for your child.

TO ADJUST THE HARNESS

Slide the two folded ends of the harness shoulder straps on the backrest out through the seat. Figure 4.

TO INSTALL THE HARNESS SYSTEM

Line up the harness straps with openings on front of the seat and turn each folded end of the harness strap so that it slides in front of the seat. Ensure that each folded end of the harness strap is flush against the back of the seat by gently pulling in front of the harness to ensure the harness is locked in place.



2. SEAT HEIGHT ADJUSTMENT

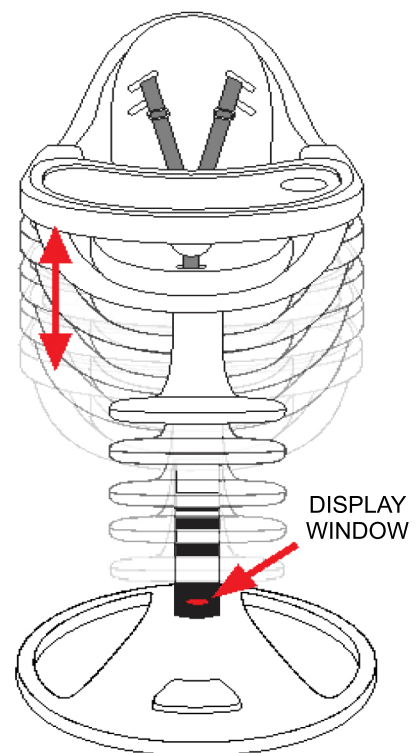
This high chair has 4 height positions.

TO RAISE THE SEAT

Grasp both sides of the seat and lift upwards. Look at display window in the lower end of the metal pole.

TO LOWER THE SEAT

Pull the seat all the way up (to the **RED** indicator) then push down to lower the seat. The seat must be lowered to the lowest position (to the **GREEN** indicator) in order to re-engage the height adjustment system.

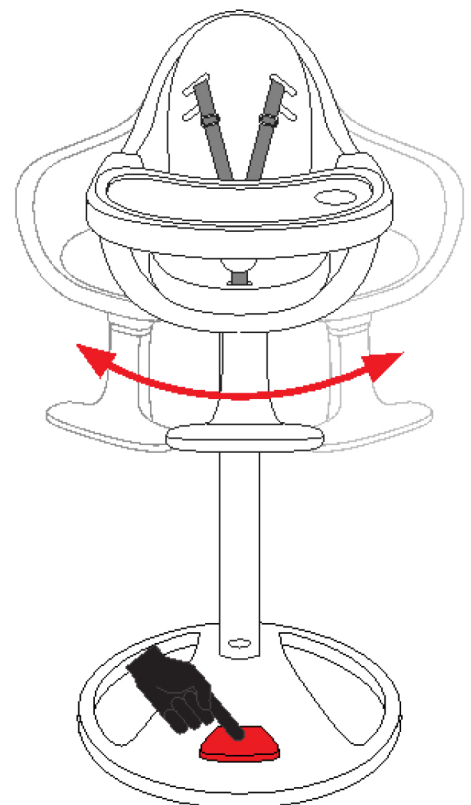


! WARNING

NEVER ADJUST SEAT WITH CHILD IN IT, THE CHILD SHOULD BE CLEAR OF ALL MOVING PARTS.

3. SEAT ROTATION ADJUSTMENT

To rotate the seat press the rotation button on the base as desired.



! WARNING

WHEN ADJUSTING ANY PART OF THIS PRODUCT, THE CHILD SHOULD BE CLEAR OF ALL MOVING PARTS.

3. USING THE MAIN TRAY AND TOP TRAY

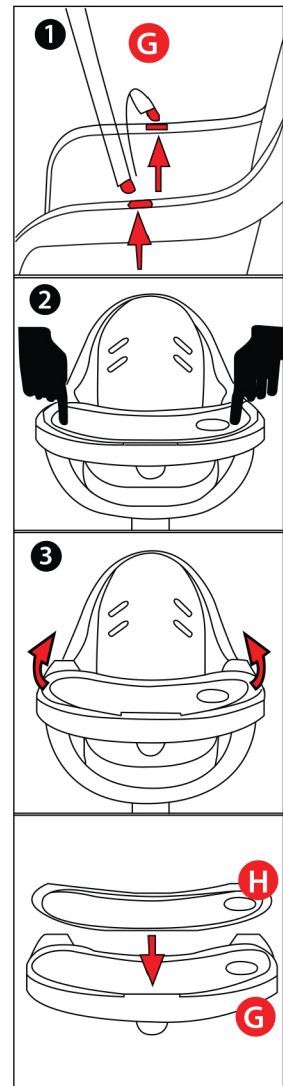
1. Locate both tabs on the tray. Tilt tray upwards and insert both tabs into holes of the seat armrest. Fig 1.

2. Tilt tray flat and push down with both hands until a 'click' locks the tray in place. Fig 2

! ENSURE TRAY IS SECURE BY GENTLY PULLING ON IT.

3. To remove the tray using both hands gently bend out tray sides, tilt tray upwards and lift tray off the seat. Fig 3.

4. To fix top tray snap tab into place on the main tray and to remove lift tab on the back of the top tray. Fig 4.



CARE & MAINTAINENCE

1. Steel , metal and plastic parts can be wiped with a damp cloth
2. DO NOT use bleach detergents or any harsh chemicals
3. DO NOT use any abrasive material as it may scratch the surface
4. Check your product regularly for loose screws worn parts , torn material.
5. Use only authorised spare parts from manufacturer
6. Always ensure the product is stored in a dry place to prevent mould or moisture developing on the product.
7. Avoid leaving the high chair under direct sunlight for long periods as it may damage the product.
8. Clean harness with a mild soap and allow to dry and re-use
9. DO NOT USE IF ANY PART IS BROKEN, MISSING OR TORN AND NO SHARP EDGES HAVE BEEN EXPOSED
10. Inspect studs, nuts and screws for tightness. Check all harness and strap attachments are secure and fitted correctly.
11. Do not use replacement parts other than those approved by manufacturer or distributor.

SAFETY WARNINGS

- **WARNING: Never leave your child unattended**
- **WARNING: Your child's safety is your responsibility**
- **WARNING: Do not use the high chair unless all components are correctly fitted and adjusted**
- **WARNING: Be aware of open fire and other sources of strong heat, such as elements, radiators, etc.**
- **Do not use for a child weighing more than 15kgs**
- **Only suitable for children who can sit unaided**
- **Always use the 5 point harness provided. Ensure that it is correctly fitted and adjusted before use**
- **Adult assembly required. Always ensure the high chair has been assembled correctly before use**
- **Ensure that the child is kept away from the high chair when assembling, opening and folding Or making adjustments to the high chair to avoid entrapment**
- **Do not allow children to play with the high chair. It is not a toy. Store safely out of reach**
- **Never carry the high chair with the child in it**
- **Please lift the child in and out of the high chair. Do not allow children to stand on the footrest**
- **Only use the high chair on level floor surfaces. Do not use near staircases**
- **Never use accessories or fittings that have not been approved by the manufacturer.**

This product complies with BS EN 14988 -1: 2006 + A1 :2012