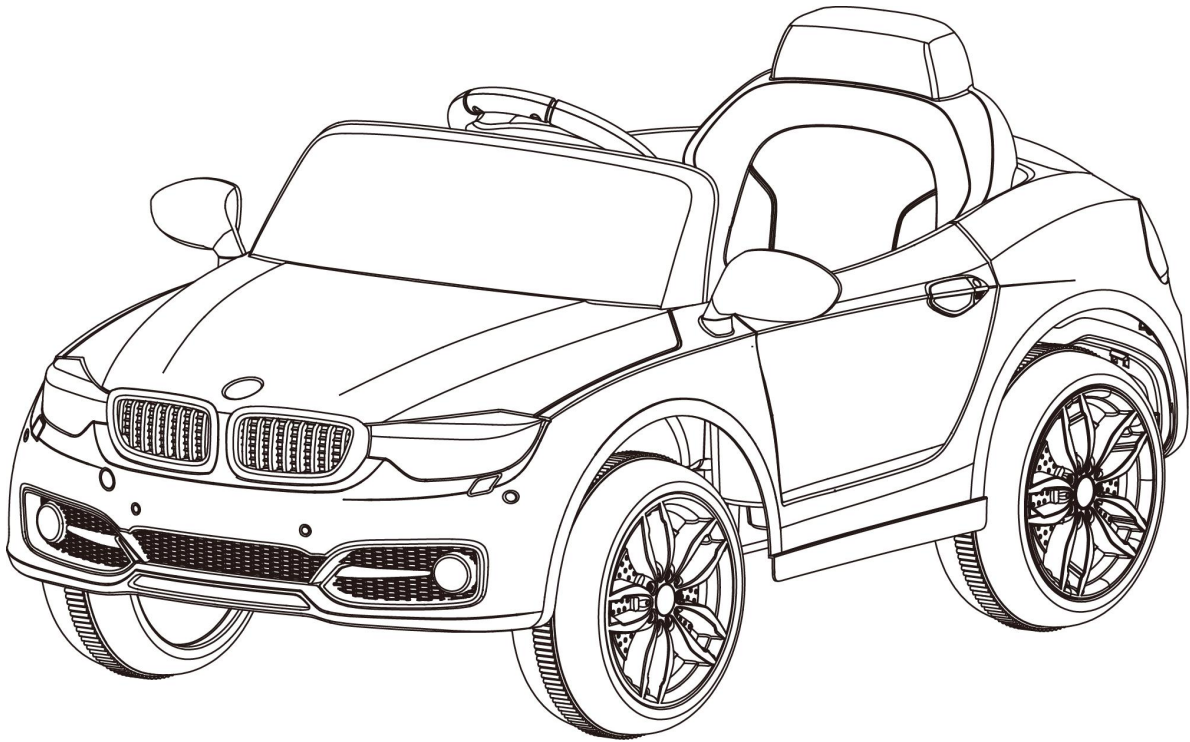


# Assembly and Operation Instruction

## Electric baby stroller

**ITEM NO: ADL1588**



- **Age range: 37~96months**
- **Load limit: 25kg**
- **The assembling and recharging process should be performed by adults.**  
**For the first use,suggested charging time is 4-6hours**

**Please read this directions carefully before assembling and using. After reading, please keep it carefully for possible future use.**

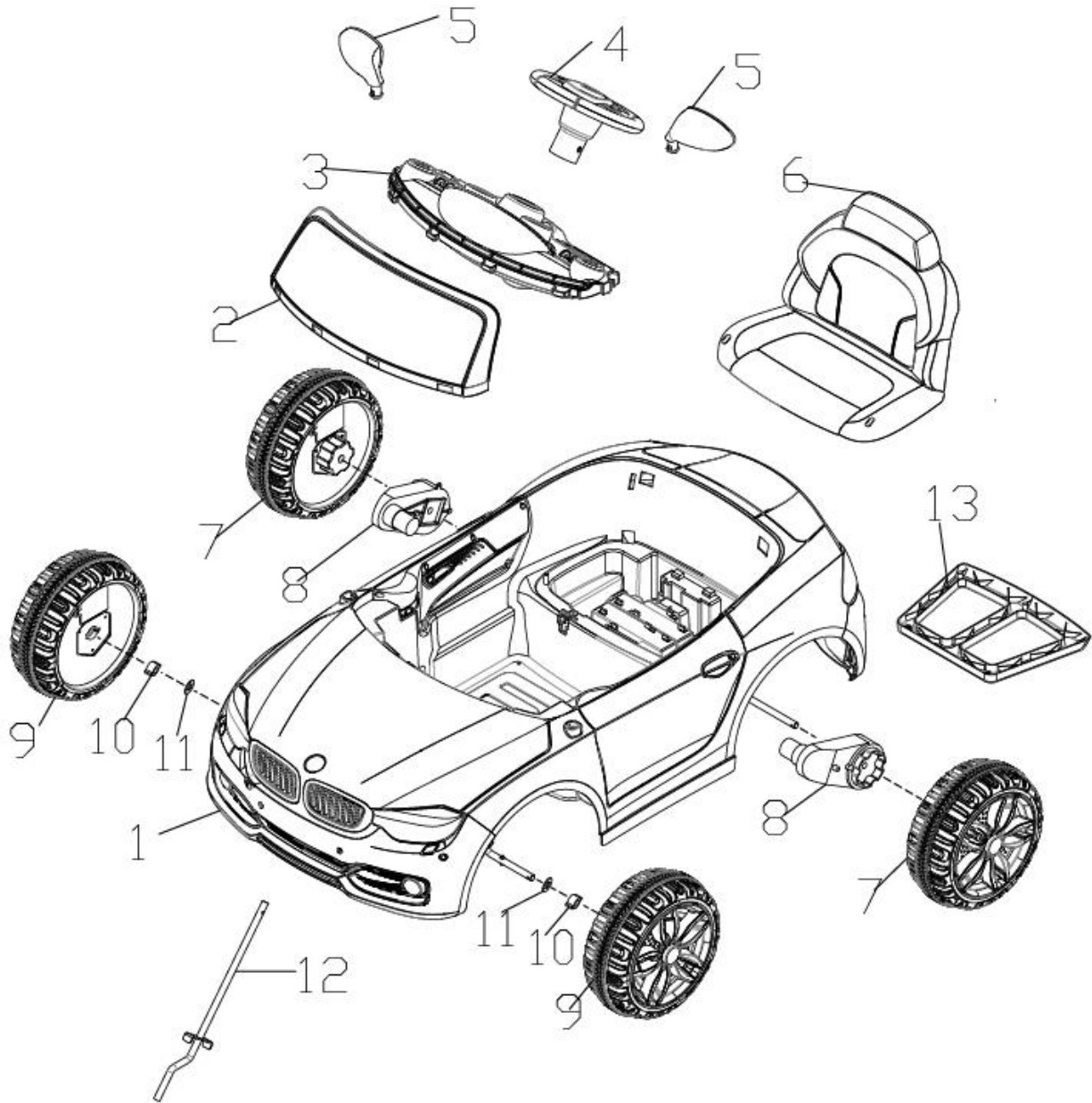
## Content:

1. Profiles and specification
2. Breakdown drawing
3. Assembling step
4. Instructions
5. Charging
6. Repairs
7. Maintenance

## Profiles and specification

Age:	37~96 months	Battery:	2*6V4AH
Max weight:	≤25kg	Size of car:	1050*550*490cm
Speed:	3~5km/h	Power way:	Charger way
Charger: 220V	Doubledrive:Output: DC12V0.5A	Average battery life:	Approximately280times
Recharger times:	8~12 hours	Fuze:	Self-resetting fuse

# Exploded view

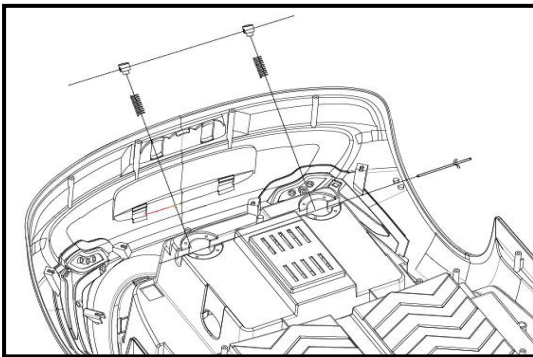


No.	Name	No.	Name	No.	Name	No.	Name
1	Car body	5	Rearview mirror	9	Front wheel	13	rear prop
2	Windscreen	6	seat	10	Wear ring		
3	Dashboard	7	Rear wheel	11	Shim		
4	Steering wheel	8	Gearbox	12	steering yoke		

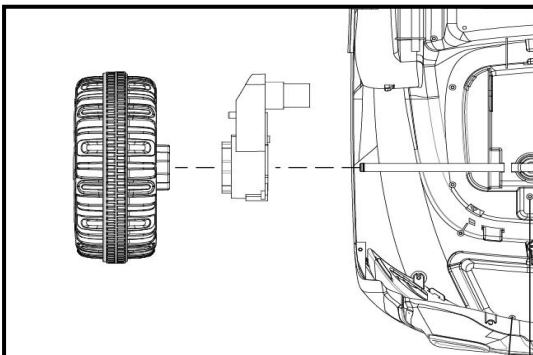
# Assembling steps

- The assembling process before using has to be operated by adults. The whole process takes approximately 30 minutes.
  - Minute parts has potential danger of choking. Children should be forbidden touching and playing !
  - Tools needed in assembling: screwdriver (self-provided), vice (self-provided)
- Before assembling, please check the number of all the parts . The plastic package should be kept away from children since there's danger of choking

## Installing rear axle and rear wheel:

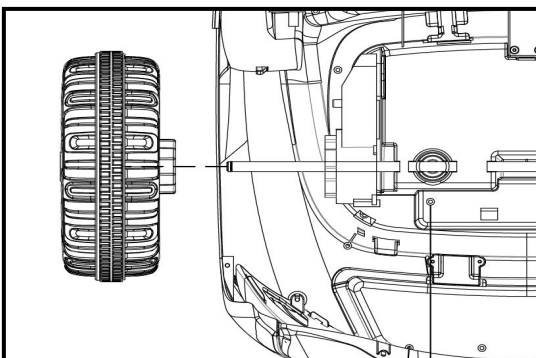


- According to the picture, put the spring and spring support into hole.
- Put rear axle through the side hole
- Make spring support down, put rear axle through the spring support's hole.
- The same operation with another spring support.
- Put the driving gear box into the back-shaft from the left of the car (make sure the motor cable connector is through the hole on the car and reach the battery cartridge from the left of the car) The use of light-emitting wheel will be shining round power line on the motor through the hole, non luminous wheel is not required.



- Loaded wheel, which coincided with the connector matching.
- Slightly forced by the boss wheels, and the wheels under pressure, the wheel assembly in place. (remark: pull the wheel to the outer pull to confirm the wheel assembly in place)

## Rear wheel:



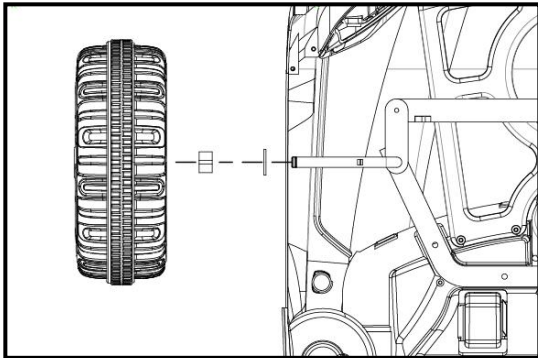
- On the other side of the assembly.
- Loaded wheel, which coincided with the connector matching.
- Slightly forced by the boss wheels, and the wheels under pressure, the wheel assembly in place. (remark: pull the wheel to the outer pull to confirm the wheel assembly in place)
- On the other side of the assembly.

**Note: single drive only one drive motor**

# Assembling steps

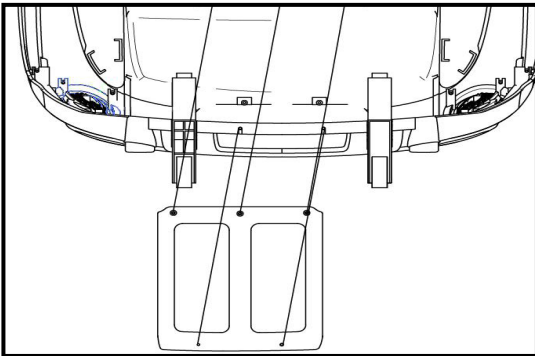
---

## Installing front wheel:



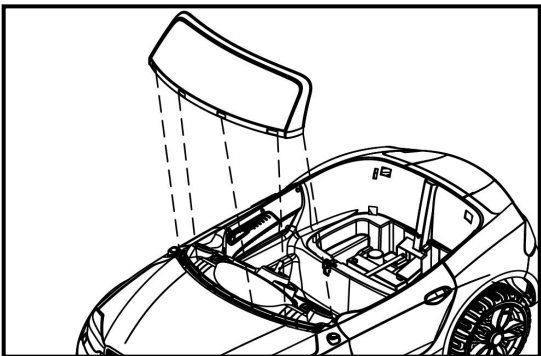
- Put 12gasket\*1 on one side of the front wheel
- Load wheel\*1
- Slightly forced by the boss wheels, and the wheels under pressure, the wheel assembly in place. (remark: pull the wheel to the outer pull to confirm the wheel assembly in place)
- On the other side of the assembly.

## Installing rear support:



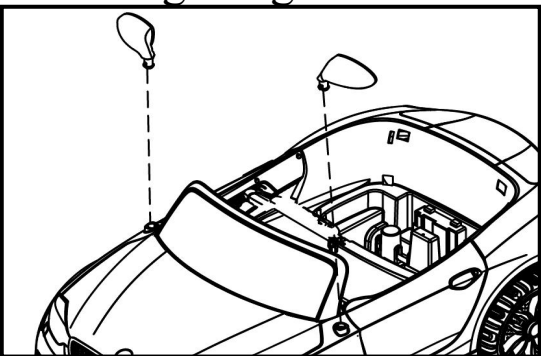
- Put the screw hole on the rear support right to the screw post on the noumenon
- Use screw driver to screw in the 4x12tapping screw

## Installing windscreen:



- Put the bayonet the corresponding net. When hearing the click sound. It means the buckle has been installed in place

## Installing wing mirror:

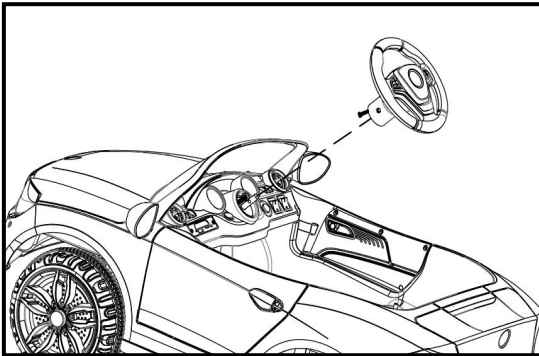


- Put up the windscreen, then according to the picture, put wing mirror's hole into the screw post on the windscreen (pay attention to the left and right)
- Using the same method to install on the other side of the mirror.

# Assembling steps

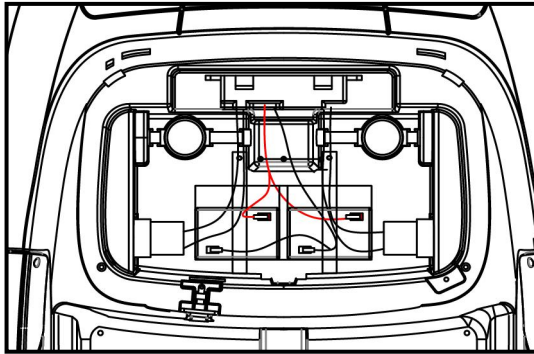
---

## Installing steering wheel:



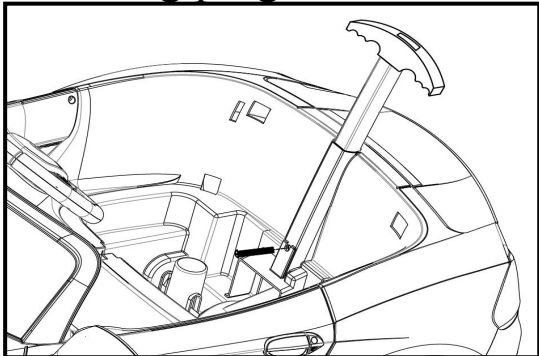
- Use the screw driver to unload the M5x35 inorganic screws.
- Connect the lead plug-in on the steering wheel to that of the open holes, and plug the steering wheel in to the end of the steering tube (pay attention that the plug-in is along the hole). Make sure the hole on the steering wheel is lined with the steering tube, then screw in the M5x35 inorganic screw.

## Connect the power:



- Screw in the M5 nut
- Connect the electricity wire on the car to that of the motor
- Connect the red wire to the electricity jar and the black wire to the black end.

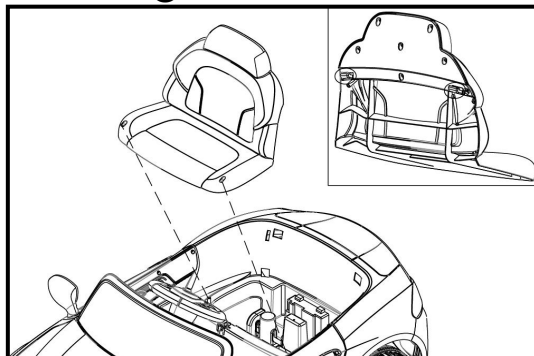
## Installing plug:



- Push the plug into the hole in the body.
- The hole and push on the hole on the body aligned, penetrating M5 screws with nut.

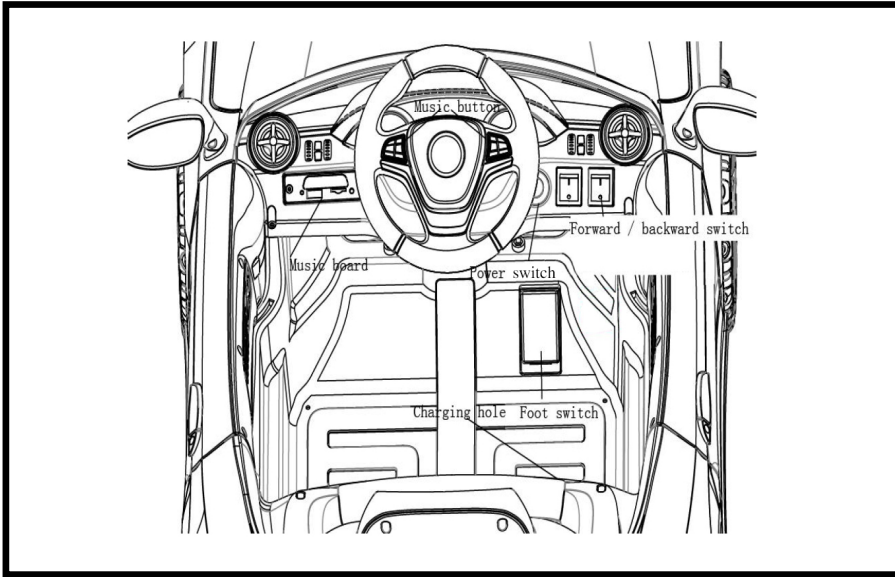
**Note: if you do not push, the installation is not.**

## Installing the seat:



- Screw off the 4x12 tapping screw of the car
- Snap the buckle on the back of the cushion into the neck.
- Use two 4x12 tapping screws to make it set

## How to use it (please make sure the switch is on)



### **Warning!**

**When change the gear, please make sure the car is completely stopped. Or it will damage the gear case and motor**

**Manual:**

**Forward:**

1. Press the "Forward/backward" switch to forward;
2. Slightly step on "foot switch", the car will moving forward

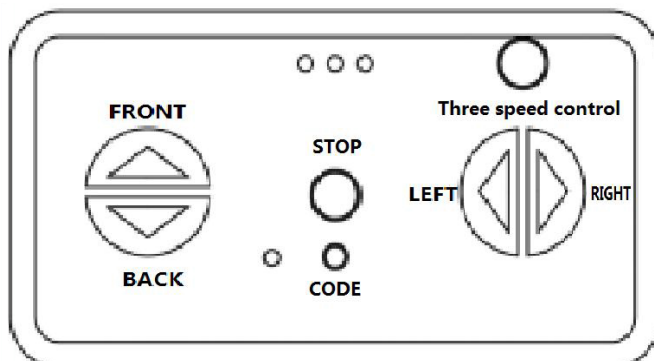
**Stop:**

Lifting the foot to loosen the "foot switch", the car will stop

**Backward:**

1. Press Switch the "forward/backward switch" to "backward";
2. Slightly step on the "foot switch" the car will moving backward.

**Remote control:** (remarks: in this mode there's no remote control/manual switch)



**Note: remote control should be used by the guardian, the child can not touch.**

How to use it (please make sure the switch is on)

---

## 2.4G Wireless stroller controller instructions

For the first time using the code, the following steps:

Step one: Installed on two AAA1.5V batteries, the remote control battery cover down to push the battery cover to open the battery (note the positive and negative polarity of the battery chamber), and finally close the battery cover, the indicator flashes three instructions battery is installed correctly;

Step two: Press the button for 2 seconds, frequency of flicker light;

Step three: Immediately turn on the power, the frequency will go out immediately, while the frequency of success;

Step four: If the frequency of the frequency is not successful (the frequency is not out), turn off the power, repeat step two and step three;

### 一、 Normal use

1. Speed choose: 3 light flashes slowly at low speed, medium speed medium speed is 3 light flashing, flashing lamp is 3 high speed high speed, each gear speed with variable speed slow start; The forward and backward button has a slow stop, press the left and right keys can be left and right, press the emergency stop button in any case to stop;

2. Press the emergency stop button on the remote control or manual, the vehicle can stop moving;

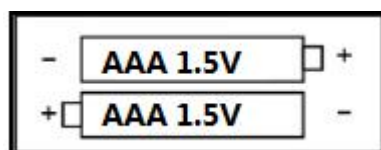
3. 15 seconds after the remote control is not used automatically cut off the power, again use no re - frequency;



## How to use it (please make sure the switch is on)

### **Battery warning:**

1. The distance of the remote control car when baby and child adult ride shall not exceed the range of 15M.
2. The remote control only allows the guardian to use, and can not let the children touch.
3. Before the remote operation to read the instructions carefully, and empty experiment, master, can make children ride and use.
4. remote control with energy saving, when a period of time (about 10 seconds), the automatic power failure, all the lights are off, and then re work when the key;
5. The frequency keys are required to be re operated for the first time using and replacing the battery;
6. The remote control car may not travel on the road and the water source, the obstacle, etc.
7. Remote control shall not be allowed to rain or other ways to avoid damage caused by immersion line.
8. Old batteries and different brands of batteries not mixed use.
9. For a long time no application for remote control, it is recommended to remove the battery, so as to avoid battery leakage, corrosion circuit board, so that the damage to remote control.
10. In the remote control process should avoid the remote control fell.
11. The battery with the correct polarity, the battery is strictly forbidden to short-circuit.
12. Rechargeable batteries can only charge under the adult guardianship. Non rechargeable battery can not charge.
13. The exhausted battery should take out the battery from the toy, properly handle, prevent the children to play.
14. When long time no toys, we should take out the battery from the toy, properly handle and prevent children to play..
15. Such as remote control range less than 3 meters, remote control battery power shortage, to replace the two No. 5 (1.5V) battery.



Music:

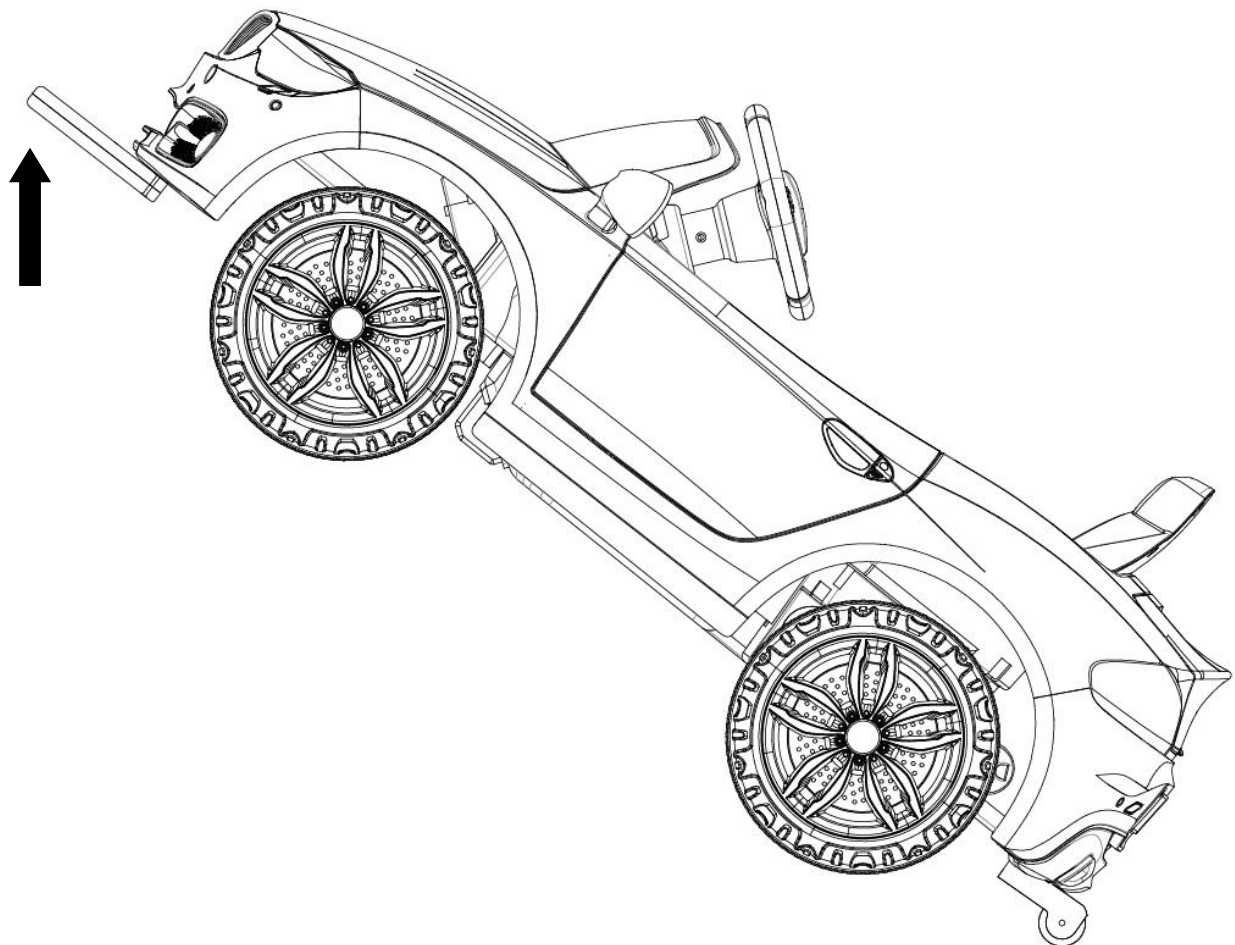
Push the button on the steering wheel, there will be trumpet or music

## **Usage**

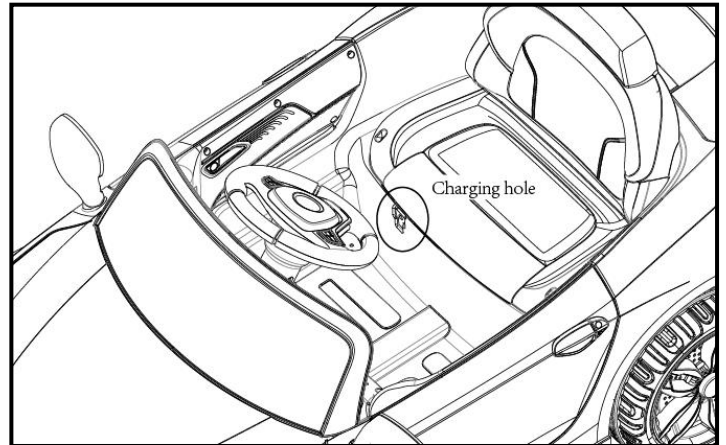
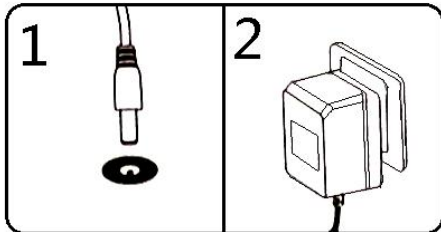
---

Using the method of auxiliary wheel, handle and matters needing attention:

1. When the car is insufficient, turn off the power.
2. The front bumper on the pulling out, after the bumper on the auxiliary wheel spins.
3. Then hold the handle, the car will be brought into 45 degrees, drag the car.
4. No children ride in the car using the handle auxiliary wheel.
5. This operation must be adult operation.



# Charging:



- Power switch must be turned in off when charging
- Charging seat is located in the rear right.
- Plug the charger into a local mains power wall outlet
- Plug in the charging seat on the electricity power

## Matters need attention when charging:

- The charging process has to be operated by adults.
- Before the firsts use of the car,make sure the battery has been charged more than 4-6hours.Or the battery would be damaged permanently and cannot be repaired.
- When charging,please turn of the battery.Put the charger plug into the charging hole before plug it on the socket.The car cannot be operated when charging.
- When the battery is low,please charge it in time.Normally the charging hour is 8-12hours,but do not charge it more than 20hours.
- It is normal that the battery jar emits heat,but when the temperature is too high,you should examine whether the recharging process is over-current or short-current.
- When there is water in socket aperture,the battery jar cannot be charged since it will cause short-current.
- Only chargers and battery equipped by this car can be used.Chargers and battery jars of other brand are strictly prohibited .Or the charger and battery might be damaged.
- When the product is packed away or will not be used for a long time,you have to fully charge the battery and charge it once every

- month to guarantee the life of the battery.
- The charger and the battery are not toy.Children should not be allowed to play with them.

## **Warning:**

- The assembling and charging process could only be operated by adults.
- Before use,please check whether all the part are installed well to position and connected tightly
- When playing this car,the distance between the car and an adult cannot be more than 10 meters
- This car should only be rode under adult's supervision
- This car cannot be used on dangerous places like streets,roads,slopes and raceways.When there is barrier ,please change directions to avoid it.
- Do not use it on smooth surfaces like marbles,floor tiles and glasses .
- Do not use this car on rainy or snowy days.
- Do not switch the forward/backward switch when advancing.Make sure kids are not standing on the seat.
- Do not change the structure,line and additional electrical devices without permission.
- The car is outfit with seat belt,Make sure the Child has fastened it.
- When the car is not used,please switch off the electric power source;When not used for a long time,pluck off the attaching plug.
- Examine the product and charger regularly to see whether the parts are becoming old or dropped off.When damage is found,the product should be stopped using until fixed.

## Simple Maintenance :

Fault type	Reason analysis	Exclusion methods
Car's not moving	<ol style="list-style-type: none"> <li>1. Battery has low voltage</li> <li>2. Fuse protection</li> <li>3. The nut of the wheel is dropped off</li> <li>4. Socked connector of the battery has fallen off</li> <li>5. Battery is flat</li> <li>6. Electrical damage</li> <li>7. Motor is broken</li> </ol>	<ol style="list-style-type: none"> <li>1. Recharging the battery</li> <li>2. Stop for several minutes before using again</li> <li>3. Screw the nut on</li> <li>4. Link it up again</li> <li>5. Change a new battery</li> <li>6. Go to the maintenance area</li> <li>7. Go to the maintenance area</li> </ol>
Battery cannot be recharged	<ol style="list-style-type: none"> <li>1. Socket connector of the battery has fallen off</li> <li>2. There's no power</li> </ol>	<ol style="list-style-type: none"> <li>1. Link it up again</li> <li>2. Plug it in</li> </ol>
Short flight mileage	<ol style="list-style-type: none"> <li>1. Battery off</li> <li>2. Battery is old</li> </ol>	<ol style="list-style-type: none"> <li>1. Recharging the battery</li> <li>2. Change a new battery</li> </ol>
There's slight sound and heat when recharging	<ol style="list-style-type: none"> <li>1. This belongs to normal chemical reaction</li> </ol>	<ol style="list-style-type: none"> <li>1. It's normal</li> </ol>
Low speed	<ol style="list-style-type: none"> <li>1. Battery is old</li> <li>2. Dead battery</li> <li>3. Overload</li> <li>4. Pavement irregularity</li> </ol>	<ol style="list-style-type: none"> <li>1. Change a new battery</li> <li>2. Recharging the battery</li> <li>3. Reduce weight bearing to below 30kg</li> <li>4. Ride on smooth-riding surface</li> </ol>
Gearbox has noise	<ol style="list-style-type: none"> <li>1. Gear is broken</li> </ol>	<ol style="list-style-type: none"> <li>1. Repair it in maintenance point</li> </ol>
Car is shaking when progressing	<ol style="list-style-type: none"> <li>1. Connector cable for lens motor contact poorly</li> <li>2. There's dead spot on the motor</li> </ol>	<ol style="list-style-type: none"> <li>1. Reconnect it</li> <li>2. Repair it in maintenance point</li> </ol>

Battery indicating light is not working	1.Body power is not on 2.Battery is dead	1.Turn it on 2.Recharging the battery
Car cannot be stopped	1.Electrical damage	1.Repair it in maintenance point

## **Maintenance :**

- **After the regular service of the product, adults should regularly (suggest once two weeks) check the main items, including storage battery, charging device, wires, outer skin, circuit changer and switching valve. Clamp devices should be checked to see whether is loose. When there ' s hidden danger, the product should be stopped being used until restored.**
- **The vehicle should be cleaned by slightly wet (no water drop) soft cotton. Also can be polished by non-wax furniture in order to make the surface bright and clean. Do not use chemical dissolvent to wipe the plastic part of the toy to avoid being dissolved. The car cannot be cleaned by soap and water since water will damage the motor and storage battery, causing short pass of the electro-circuit system.**
- **After using for a period of time,please use lubricating oil to lubricate the iron part in order not to get rusty.**
- **The car should be kept away from high temperature and moistness ,since the plastic parts might melt.When charging,please keep it away from inflammable materials so that fire will not occur.**
- **After using,please recharge it in time.Recharging should be operated by adults.If the car will not be used for a long time or be stored up,it has to be fully-recharged before storage.Then recharge it once every month to lengthen its life.**
- **When stop or not using for a long time ,please cut off the power .All the circuit changers should be switched to “STOP”or “OFF” .The structure and wire system cannot be altered without authorization.Maintenance and replacement of crucial parts should be supervised by professionals.**
- **In areas where power supply is unstable,installing power regulator is highly recommended to protect the storage battery when recharging.**
- **Do not use safety wires not accord with the product.**

# PlayActive

outdoor toys for kids

Thank you for choosing a PlayActive product. We hope your child will endure many years of fun with this item. If you require any trouble shooting assistance or help on assembly please view our tutorial videos available on our website.

**[www.playactive.net](http://www.playactive.net)**

## **WARNING!**

**Do not use this vehicle indoors. Using this vehicle in confined areas may cause the vehicle's motors to over load.**

If you require any further assistance please contact the outlet you purchased this item from.